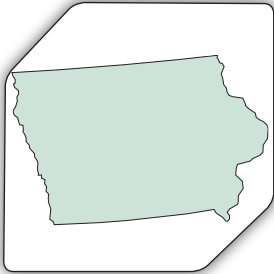


LiDAR Services

Aerial Services' advanced Light-imaging Detection and Ranging (LiDAR) services can be dispatched to make sense of Iowa's statewide LiDAR survey and/or your customized LiDAR project.



Aerial Services' can help you get the most out of Iowa's LiDAR data.

Iowa LiDAR Data - Get The Post-Processing Assistance You Need

The release of accessible LiDAR data for Iowa can argue your engineering, land use, and mapping projects. But without deriving that data into a useful form, use of this resource may be limited. This is where Aerial Services can help. With decades of geospatial experience in Iowa, they can help you get the most out of your data.

Before Using, Quality Control Check For Positional Accuracy

When the Iowa LiDAR data is released, you'll need to make sure it is applicable for your purpose(s). Aerial Services will perform quality control procedures to determine the positional accuracy of the data. Then they'll help you understand your options for utilizing the data.

Experienced LiDAR Team, Alongside The Company You Already Trust

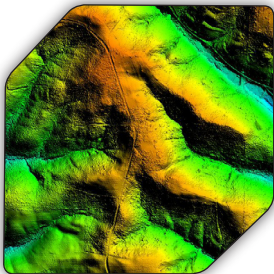
With the addition of a committed LiDAR team, you can be confident you are getting the best service available. This experienced team of LiDAR professionals work alongside the years of aerial photography, photogrammetric, and geospatial experience already at Aerial Services.

Supplement Data Further & Create Value Added Solutions

Because Aerial Services is a full-service geospatial provider, their photogrammetrists can combine LiDAR with traditional photogrammetric solutions. By supplementing LiDAR data with traditional methods you can get more out of your investment.

Custom LiDAR Services

Not interested in Iowa's free LiDAR data? Aerial Services' team is able to field any request for LiDAR assistance. Feel free to give them a call at 877-477-4447 to discuss your specific needs.



Shaded Relief Models are just one way Aerial Services can output your LiDAR data.

The logo for Aerial Services, Inc. (asi) in a large, lowercase, sans-serif font. A large, light blue arrow points from the bottom left towards the top right, passing behind the letters.